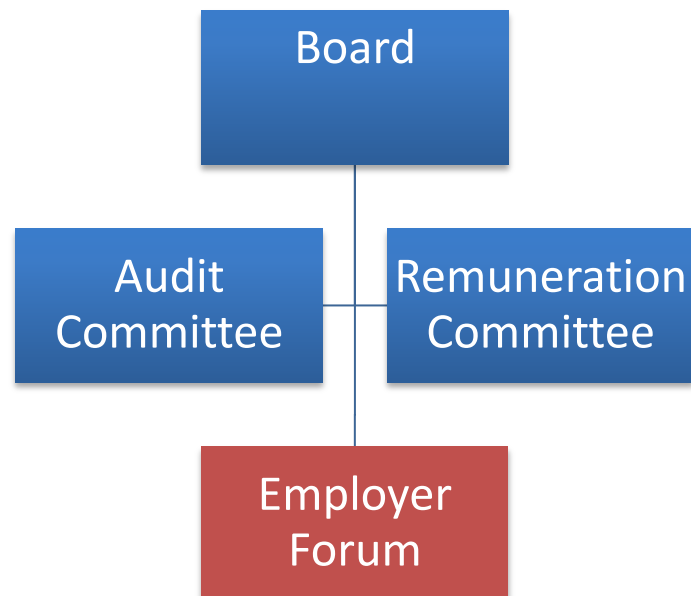


ANNEX L OF STANDING ORDERS – BOARD STRUCTURE



Membership

Board:

14 Governors maximum including 2x staff, 2xstudent, CEO and 9 external.

Quorum: 40% of existing members

Audit: 5 members including 3 external and 2 co-opted.

Quorum 3 of at least 2 of whom should be Governors

Remuneration: 4 members.

Quorum 3

Employer Forum to include governor with local business experience

Ad- hoc Committees

Special Committee - an ad hoc committee to be established when required to hear appeals to the Board by staff, to conduct a disciplinary hearing into allegations against a holder of a senior post; or to hear the final stage of a grievance by a senior post holder. Membership 3 and quorum 3

The Board has the powers to convene panels or 'task and finish' groups with a defined scope, delegated powers and timespan, should the business needs of the College require it.